



Social Isolation and Loneliness Forum Program & Speakers' Bios

- A. Thomas Cudjoe, MD MPH, Geriatrician, Assistant Professor Johns Hopkins University School of Medicine, Department of Medicine, Division of Geriatric Medicine and Gerontology**
Connecting, COVID-19, and Aging: Challenges and Opportunities



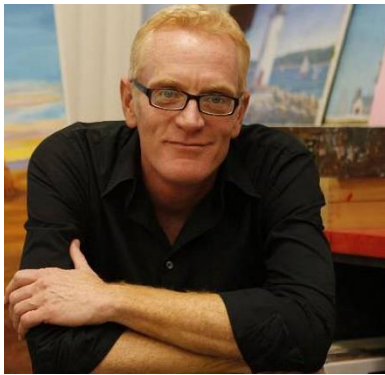
Dr. Cudjoe is an Assistant Professor at the Johns Hopkins School of Medicine in the Department of Medicine, Division of Geriatric Medicine and Gerontology. He is board certified internal medicine and geriatric medicine. In addition, Dr. Cudjoe is a Major in the US Army Reserves, a participant in the inaugural cohort of the Robert Wood Johnson Foundation Culture of Health Leaders Program and serves on board of the East Baltimore Community School- Henderson Hopkins. In 2019, Dr. Cudjoe was appointed as a Commissioner to the Baltimore City Commission on Aging and Retirement Education. Dr. Cudjoe is actively engaged in the medical care of homebound older adults via the Johns Hopkins Home Based Medicine program. Dr. Cudjoe is a recipient of the National Institute on Aging Grants for Early Medical/Surgical Specialists' Transition to Aging Research.

Dr. Cudjoe is focused on understanding how social factors influence the health of older adults and developing strategies to improve the health trajectory of older adults. His research has focused on identifying risk factors for social isolation and currently examine the relationship between social connections and health outcomes including cognitive function, advance care planning and homebound status. Dr. Cudjoe has also worked with a group of investigators funded through the Johns Hopkins Roybal Center to develop an intervention to enhance the social networks and physical function of older adults with End Stage Renal Disease.

Dr. Cudjoe received his undergraduate degree (*summa cum laude*) in Cellular and Molecular Biology at Hampton University and was active in the Honors College and Army ROTC program (*Distinguished Military Graduate-Top 20% of Graduates in Nation*). He graduated from Robert Wood Johnson Medical School and earned his master's degree in public health in health policy at Harvard School of Public Health. He completed his internal medicine residency Internal Medicine at Howard University Hospital in Washington, DC. He completed clinical and research fellowship in the Division of Geriatric Medicine and Gerontology at the Johns Hopkins School of Medicine.



B. Tim Carpenter, Founder/CEO, engAGE
Overcoming the Challenges of COVID



Tim Carpenter founded EngAGE in 1999 and has served as the host/producer of the EXPERIENCE TALKS radio show since 2003. EngAGE creates community and changes lives by transforming affordable senior and multigenerational housing projects into vibrant centers of learning, wellness, and creativity. EngAGE provides life-enhancing arts, wellness, lifelong learning, community building and intergenerational programs and events to thousands of seniors and hundreds of families living in California, Oregon and Minnesota.

Experience Talks is a radio magazine that shines a light on the value of experience in society, airing on KPFK 90.7 FM in Los Angeles, streaming live worldwide on the web at www.kpfk.org, and syndicated by the Pacifica Radio Network. Tim also catalyzed the creation of the Burbank Senior Artists Colony, a first-of-its-kind senior apartment community with high-end arts amenities and programs. The NOHO Senior Arts Colony, Long Beach Senior Arts Colony, and two multigenerational all ages communities, the Pacific Avenue Arts Colony and ACE/121, the Glendale Arts Colony are now open and there are five more in development. In 2008, Tim was elected an Ashoka Fellow for his work as a social entrepreneur, and in 2011 he received the James Irvine Foundation Leadership Award. Most recently he was awarded the Stanton Fellowship for 2016-17 by the Durfee Foundation and named one of Next Avenue's 2016 Influencers in Aging. He was appointed this year to California Governor Gavin Newsom's task force on Alzheimer's to create solutions in the aging arena in the state.



C. Amy Greensfelder, LMSW, Executive Director Pro Bono Counseling Project
Baltimore Neighbors Network-Connecting our Neighbors to Community



Amy Greensfelder is the Executive Director at the Pro Bono Counseling Project (PBCP). She has been with PBCP since September 2017. Ms. Greensfelder is a Licensed Masters Social Worker (LMSW) and a graduate of the University of Maryland Baltimore School of Social Work. Prior to joining the Pro Bono Counseling Project Ms. Greensfelder served at the Maryland Department of Health's Refugee Mental Health Program Coordinator. In that role she developed the state of Maryland's refugee mental health program which includes screening of newly arrived refugees for mental health concerns, support groups, training of mental health

providers to work with refugee populations, and training of interpreters to work in mental health settings. Additionally, she has worked in overseas processing of refugees seeking admission to the United States and domestically in immigration legal services. She lives in Baltimore City with her spouse, kid, two pit bulls, and, during COVID, her mother has joined the household.



D. Scott Kaiser, MD, Chief Innovator Officer, Director of Geriatric Cognitive Health at Pacific Brain Health Center

Loneliness and Social Isolation: A Crisis We Can Solve Together

Scott A. Kaiser M.D., is a practicing geriatrician and Chief Innovation Officer at MPTF (Motion Picture & Television Fund), a non-profit organization which provides services, support and assistance to the entertainment industry community. In this role, Dr. Kaiser leads efforts to improve population health and well-being through social and community-based interventions. With a clinical focus on brain health, Dr. Kaiser serves as the Director of Geriatric Cognitive Health at the Pacific Brain Health Center, where he provides specialty geriatric medical care. An adjunct faculty member at the USC Leonard Davis School of Gerontology and actively involved in several community organizations, Dr. Kaiser continues to be engaged in teaching, program development, community-outreach, and research. He is passionately committed to advancing innovations in geriatric care and developing effective ways to improve health and well-being in an aging population.



E. Patrick Arbore, Founder of Institute on Aging Friendship Line and Director and Founder of the Center for Elderly Suicide Prevention and Grief Related Services

Friendship Line, an Alternative to the Traditional Suicide Prevention Hot-line Mode



Patrick Arbore, Ed.D, began his career in the field of aging in 1972. He is the Founder and Director of the Center for Elderly Suicide Prevention and Grief Related Services (CESP), a program of Institute on Aging in San Francisco. He conceived the 24-hour accredited Friendship Line in 1973 and the methodology for the traumatic grief services in the early 1980's. Patrick conducts workshops and presents lectures locally and nationally on aging related subjects including elderly suicide prevention, ageism, loneliness, social isolation, senior bullying, hoarding, substance abuse, burn-out, compassion fatigue, traumatic loss, and many others. He is the author

of numerous articles and book chapters on a variety of aging related topics. A recent article, "Suicide Prevention among Rural Older Adults," was published in the Summer, 2019, edition of Generations, a publication of the American Society on Aging. He is a Senior Lecturer at Notre Dame de Namur University in Belmont, CA; an adjunct Faculty member with the University of California, Davis, Continuing Education Department, and an Adjunct Faculty at The Wright Institute. Patrick was the recipient of the 2013 Mental Health and Aging Award presented by the American Society on Aging. In January 2015, Patrick was selected as a Silver Medalist for Public Service sponsored by the Jefferson Award Regional Committee. Patrick was the recipient of the 2016 Norma Satten Community Service Innovation Award for his commitment to human rights and community living. Patrick currently is a member of the Editorial Board of "Generations," a publication of the American Society on Aging.



F. Kelly Hodge-Williams, President, KHW Consulting, Development Director, PCs for People
Overcoming the Digital Divide for Older Adults

Kelly Hodge-Williams is the President of KHW Consulting and provides advisory and consulting services to organizations looking to build strategic partnerships, design and launch new programs and initiatives, strengthen Boards of Directors, and develop impact-oriented investment and philanthropy strategies. Kelly lead the effort to bring PCs for People to Baltimore and currently serves as the Development Director. PCs for People is a national nonprofit working to close the digital divide by providing low or no-cost refurbished computers, mobile Internet access, digital literacy training, repair and tech support services to low-income families and nonprofits that serve vulnerable populations.



In 2003, Kelly founded Business Volunteers Maryland and served as its President & CEO for 16 years. Business Volunteers is a charitable nonprofit organization that works to strengthen our community by enabling businesses to develop purpose-driven community engagement programs, training and matching professionals with nonprofit boards, developing the next generation of civic leaders, and supporting meaningful volunteerism.

Prior to her work at Business Volunteers, Kelly was the Executive Director of the Sylvan-Laureate Foundation and the Book Adventure Foundation. Prior to Sylvan, Kelly worked at Alex. Brown, an investment firm in Baltimore, MD, where she was an investment advisor for high-net worth individuals and money management firms.

Kelly is a graduate of The GBC Leadership program and has received several awards including the Daily Record *Top 100 Woman of Maryland* Award and SmartCEO's Brava Award. Kelly is active in the community and has served on the boards of The Leadership, Big Brother Big Sisters of the Greater Chesapeake, Hands on Baltimore, National Academy Foundation and currently serves on the boards of the Creative Alliance. She is a Co-Founder of Baltimore's Digital Equity Coalition which was created in April 2020. Kelly received her bachelor's degree in Business and Finance from Loyola University Maryland.



Thank you to our sponsors!

